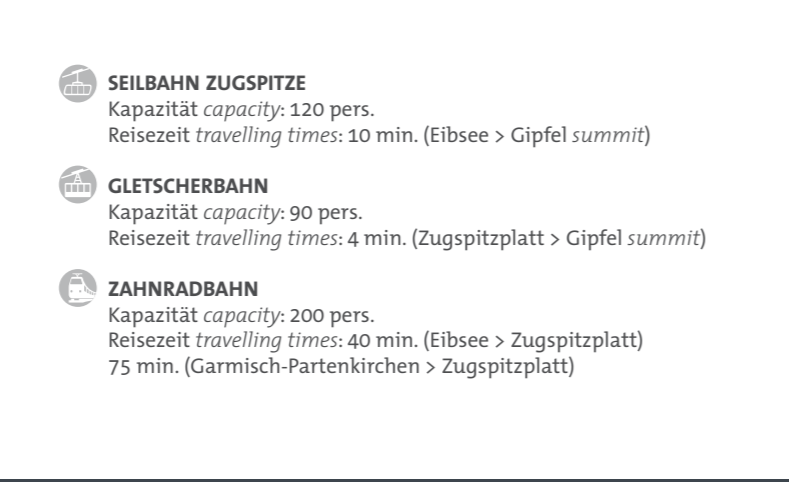
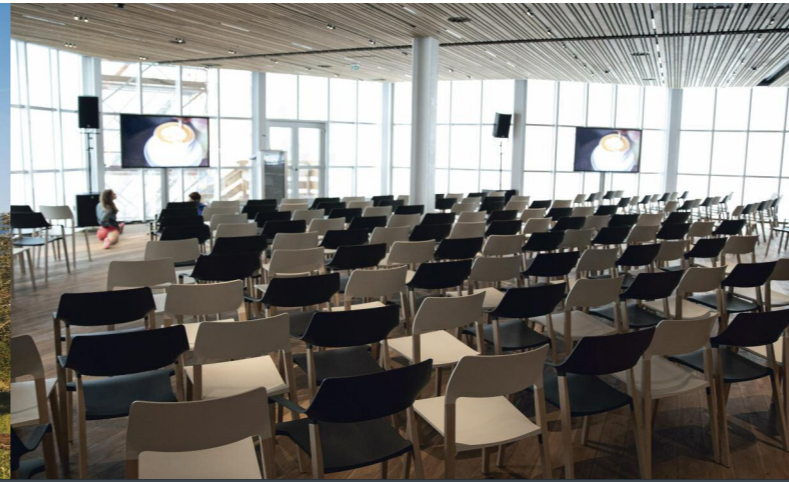
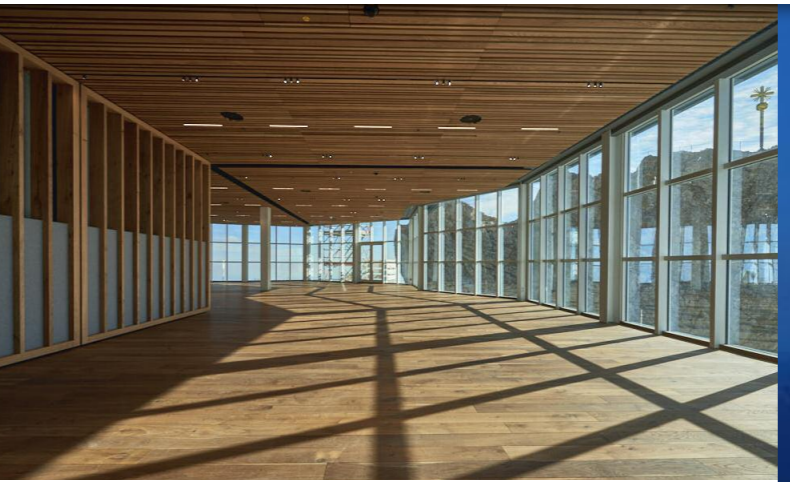







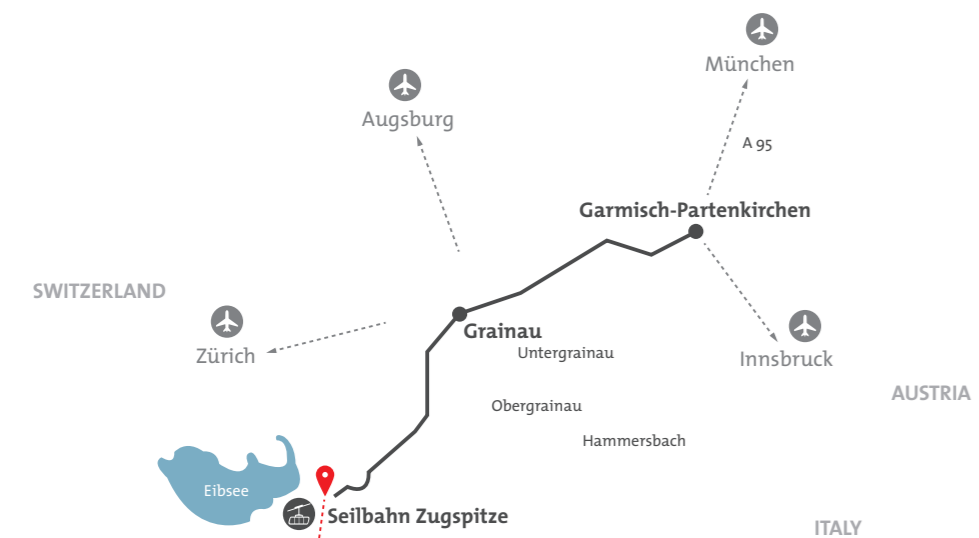
Zugspitze  
TOP OF GERMANY



# Gipfeltreffen summit meeting



-  **SEILBAHN ZUGSPITZE**  
Kapazität *capacity*: 120 pers.  
Reisezeit *travelling times*: 10 min. (Eibsee > Gipfel *summit*)
-  **GLETSCHERBAHN**  
Kapazität *capacity*: 90 pers.  
Reisezeit *travelling times*: 4 min. (Zugspitzplatt > Gipfel *summit*)
-  **ZAHNRADBAHN**  
Kapazität *capacity*: 200 pers.  
Reisezeit *travelling times*: 40 min. (Eibsee > Zugspitzplatt)  
75 min. (Garmisch-Partenkirchen > Zugspitzplatt)



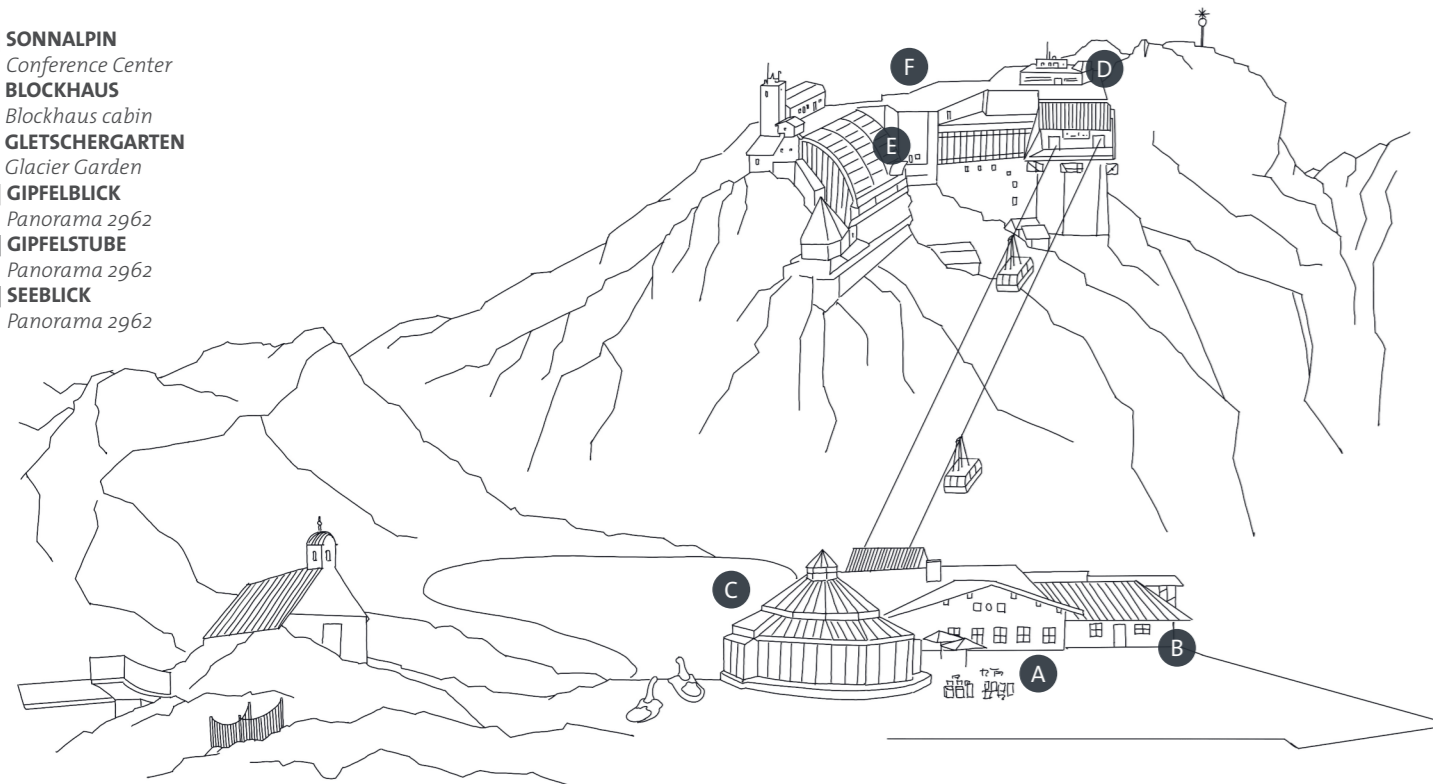
**BAYERISCHE ZUGSPITZBAHN Bergbahn AG**  
 Olympiastraße 27 | D-82467 Garmisch-Partenkirchen  
 Telefon: +49 (0) 8821 797-992 | Fax: +49 (0) 8821 797-901  
 zugspitzbahn@zugspitze.de | zugspitze.de  
 facebook.com/zugspitze.de | instagram.com/zugspitze.de

**IMPRESSUM | Legal notice**  
 Design/Konzept *design/concept* NAGEL Werbeagentur | agentur-nagel.de  
 Herausgeber/für den Inhalt verantwortlich *publisher responsible for content* Bayerische Zugspitzbahn Bergbahn AG  
 Bilder *photos* Matthias Fend, Maximilian Prechtel | Druck *printed by* Mayr Miesbach GmbH  
 Fehler, Irrtümer und Änderungen vorbehalten. *Subject to errors, misprints and changes.*

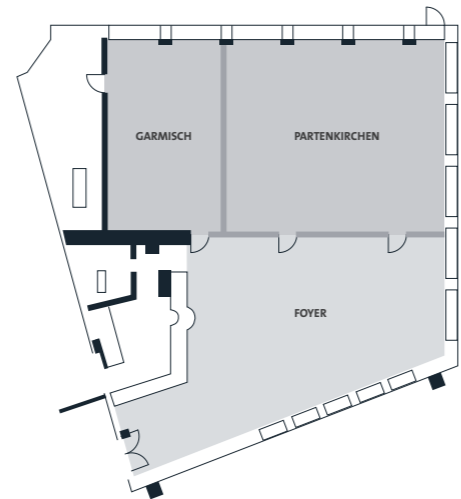
**WER DEN BERG LIEBT AKZEPTIERT SEINE BEDINGUNGEN | Those who love the mountains accept its terms and conditions**  
 Bitte beachten Sie unsere AGB's | Please note our General terms of business: [zugspitze.de/de/service/ueberuns/agb](http://zugspitze.de/de/service/ueberuns/agb)

**LAGE**  
LOCATION

- A | SONNALPIN  
Conference Center
- B | BLOCKHAUS  
Blockhaus cabin
- C | GLETSCHERGARTEN  
Glacier Garden
- D | GIPFELBLICK  
Panorama 2962
- E | GIPFELSTUBE  
Panorama 2962
- F | SEEBLICK  
Panorama 2962

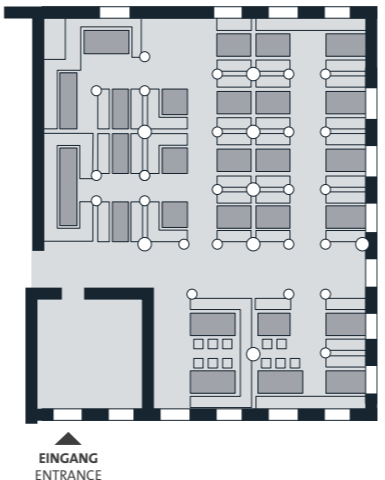


**A | SONNALPIN**  
CONFERENCE CENTER



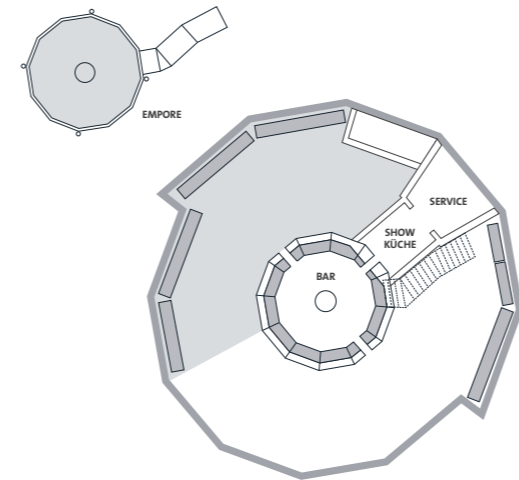
MAX 120 PAX	Garmisch	Partenkirchen	Gap	Foyer
Fläche floor area	63	83	146	100
U-Form U-form	26	32	52	-
Parlament Parliament	27	36	72	-
Kino Cinema	40	60	120	-
Feste Bestuhlung Fixed Seats	-	-	-	60

**B | BLOCKHAUS**  
BLOCKHAUS CABIN



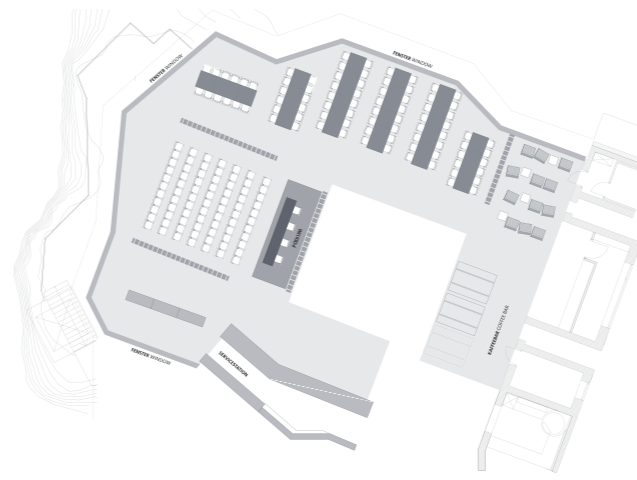
MAX 150 PAX	
Fläche floor area	180
U-Form U-form	-
Parlament Parliament	-
Kino Cinema	-
Feste Bestuhlung Fixed Seats	150

**C | GLETSCHERGARTEN**  
GLACIER GARDEN



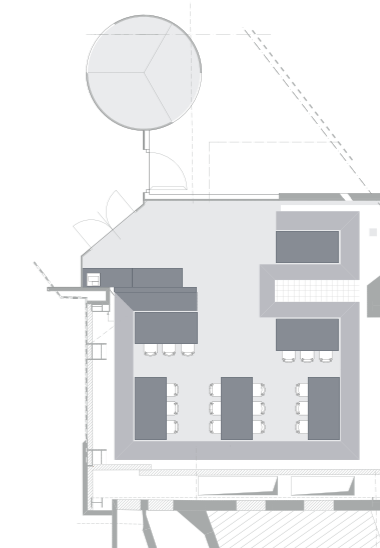
MAX 80 PAX	
Fläche floor area	-
U-Form U-form	-
Parlament Parliament	-
Kino Cinema	-
Feste Bestuhlung Fixed Seats	80

**D | GIPFELBLICK**  
PANORAMA 2962



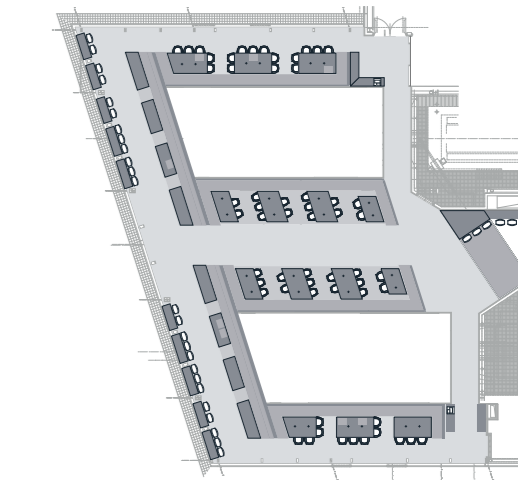
MAX 173 PAX	
Fläche floor area	380
U-Form U-form	-
Parlament Parliament	-
Kino Cinema	173
Bankett Banquet	173

**E | GIPFELSTUBE**  
PANORAMA 2962



MAX 44 PAX	
Fläche floor area	80
U-Form U-form	-
Parlament Parliament	-
Kino Cinema	-
Feste Bestuhlung Fixed Seats	44

**F | SEEBLICK**  
PANORAMA 2962



MAX 145 PAX	
Fläche floor area	-
U-Form U-form	-
Parlament Parliament	-
Kino Cinema	-
Feste Bestuhlung Fixed Seats	145